

Instructions for use

DNA Sample collection kit

Registered collection kit

- Your collection set is already registered on the platform
- All your personal information is safe as you can read in our privacy policy

Consent form

Sign the consent form. If your doctor takes the sample at the clinic, the doctor must also sign the written consent. The second consent form is for you.

Barcode sticker

It is very important that you provide the DNA sample with the supplied barcode stickers (see step 7 in the instructions for use).

Send

Use the return shipping bag to send the DNA sample, together with 1 signed consent form.

The outcome

The doctor selected by you will receive the results of the test within 4 weeks.



UKRP Fagron UK Ltd
Media Exchange,
4B Coquet Street
Newcastle upon Tyne, NE1 2QB
United Kingdom

Contact: info@fagron.co.uk



Bsure Medical B.V.
Achillesstraat 85
1076 PX Amsterdam
The Netherlands

Instructions of use

DNA Sample collection kit

Instructions for use

DNA Sample collection kit

This instructions for use help you to correctly collect and send the DNA sample.

This sample collection kit contains:

- Instructions for use
- 2 consent forms
- 1 swab tube
- 1 pair of gloves
- 1 transparent plastic "biohazard" bag
- Barcode stickers
- A return shipping bag

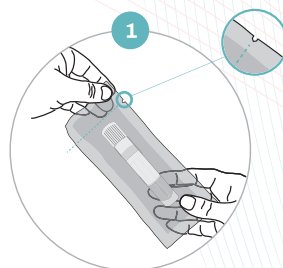
IMPORTANT!

Read this information carefully before you start.

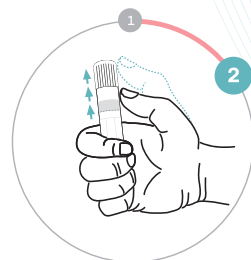
Correct removal of the oral mucosa is crucial for the result of the DNA test. Follow the instructions below and the 5 steps for correctly collecting the DNA sample:

- Wear gloves when collecting the DNA sample.
- Hold the swab by the handle while taking the DNA sample.
- Take the DNA sample immediately after opening the package.
- Do not apply too much pressure and do not bend the cotton swab when taking the DNA sample, as this can break the swab.
- We advise not to smoke, eat, drink or brush your teeth at least 1 hour before taking the DNA sample. DO rinse your mouth with water before taking the DNA sample.

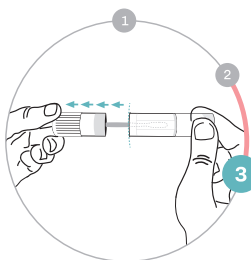
Taking the sample



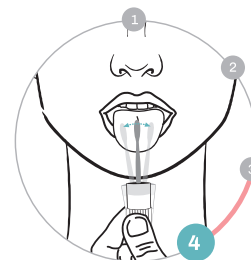
1. Put on the gloves and carefully take the test tube out (figure 1).



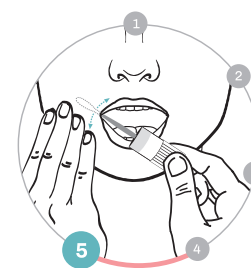
2. To open the device easily, hold the test tube with one hand and, with your thumb, push the top of the cap above the label (figure 2).



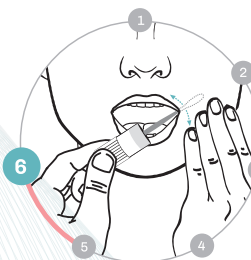
3. Holding the device by its cap, take the cap off and place the test tube upright on a clean surface, and do not touch it again (figure 3).



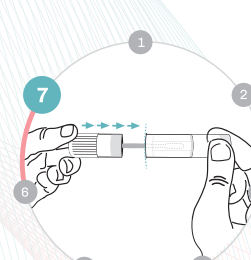
4. Holding the device by its cap, place the swab inside the mouth, onto the tongue. Close the mouth and keep the swab in position for ten seconds in order to wet the swab with saliva (figure 4).



5. Move the swab between cheek and gums. Helping yourself with your other hand, press down lightly on the cheek and rub the swab forcefully back and forth ten times (figure 5).



6. Repeat step 5 on the opposite side of the mouth (figure 6).



7. Insert the cap with the swab inside the test tube and close firmly until you hear a click (figure 7). Stick the barcode sticker on the plastic tube to identify your test. It can not be analysed without a barcode. Place the sample tube in the transparent "biohazard" plastic bag, together with the signed consent form. Send the sample to analysis, following the process agreed with your sales representative.